

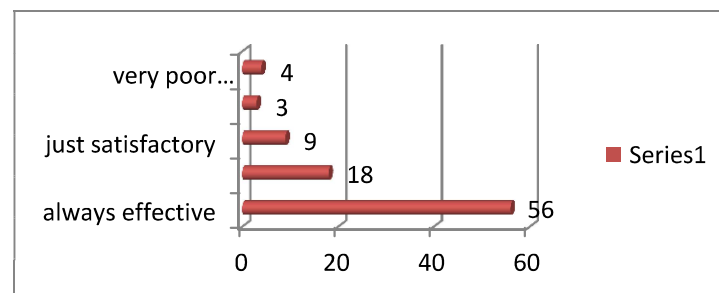
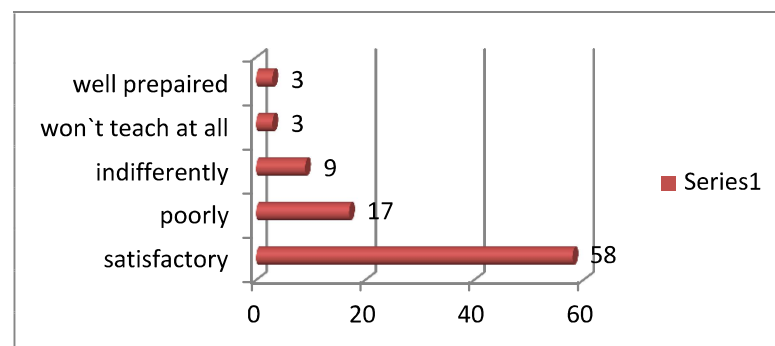
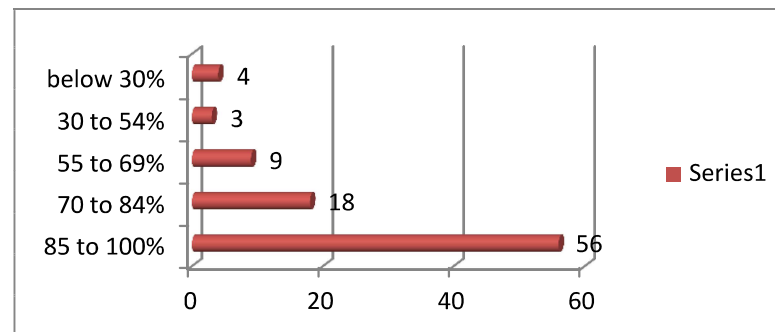
STUDENT SATISFATION SURVEY(2023-24)

Rank	1. how much of the syllabus was covered in the class?	
4	85 to 100%	56
3	70 to 84%	18
2	55 to 69%	9
1	30 to 54%	3
0	below 30%	4

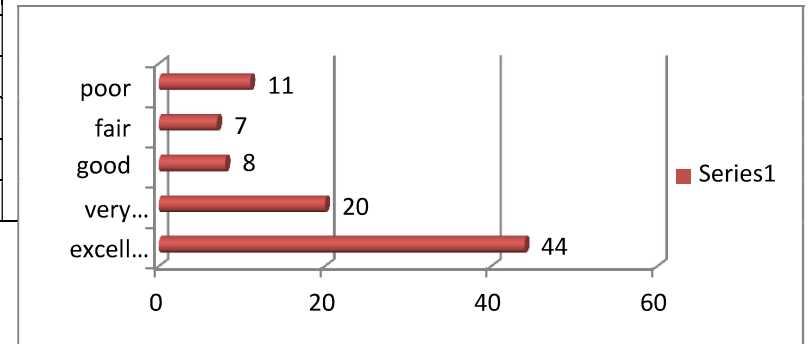
Rank	2. how well did the teachers prepare for the classes?	
4	satisfactory	58
3	poorly	17
2	indifferently	9
1	won't teach at all	3
0	well prepared	3

Rank	3. how well were the teachers able to communicate?	
4	always effective	56
3	sometimes effective	18
2	just satisfactory	9
1	generally ineffective	3
0	very poor communication	4

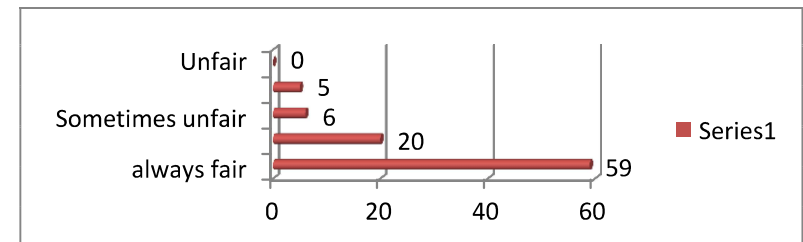
ANALYSIS



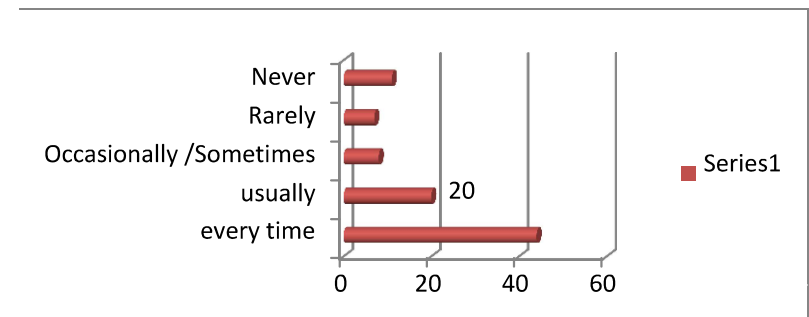
Rank	4. the teachers approach to teaching can best be descibed.	
4	excellent	44
3	very good	20
2	good	8
1	fair	7
0	poor	11



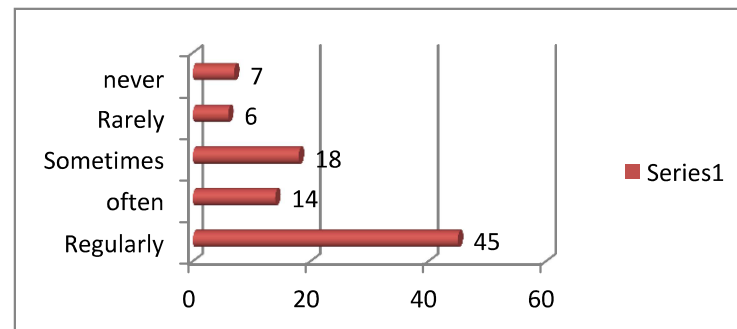
Rank	5. Fairness of the internal evaluation process by the teachers.	
4	always fair	59
3	usually fair	20
2	Sometimes unfair	6
1	Usually unfair	5
0	Unfair	0



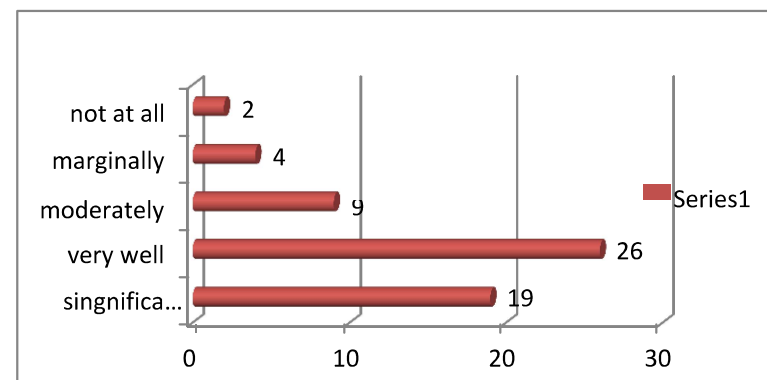
Rank	6. was your performance in assignment discussed with you?	
4	every time	44
3	usually	20
2	Occasionally /Sometimes	8
1	Rarely	7
0	Never	11



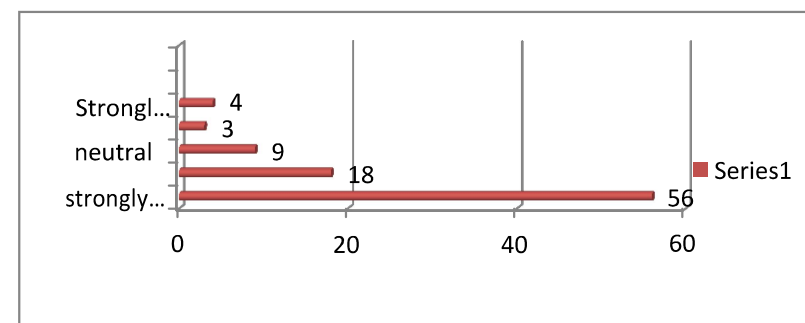
Rank	7. The institute takes active interest in promoting intership, student exchange ,student exchange , field visit oppotunitisties for students.	
4	Regularly	45
3	often	14
2	Sometimes	18
1	Rarely	6
0	never	7



Rank	8. the teaching and mentoring process in your institution facilitates you in cognitive ,social and emotional growth.	
4	singnificantly	19
3	very well	26
2	moderately	9
1	marginally	4
0	not at all	2

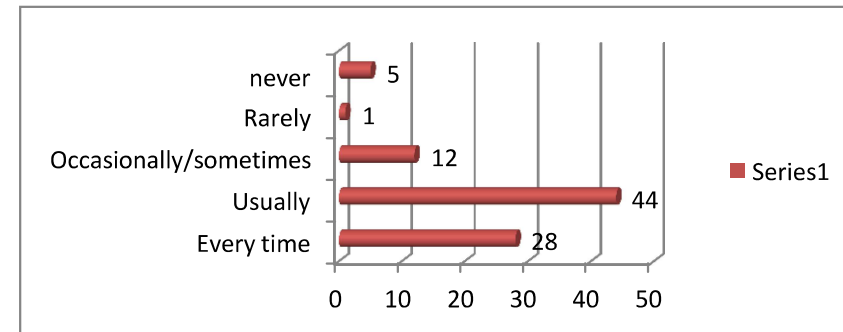


Rank	9. The institution provides multiple opportunities to learn and grow.	
4	strongly agree	56
3	agree	18
2	neutral	9
1	Disagree	3

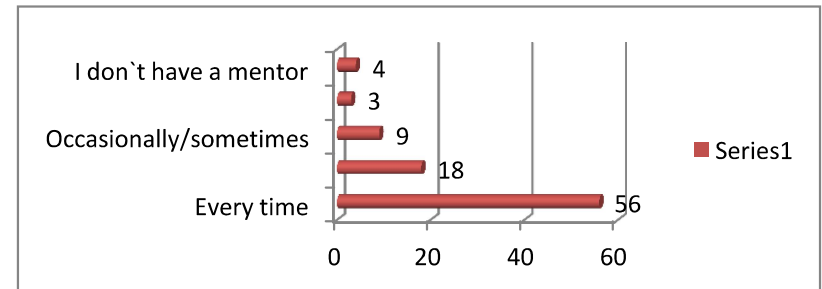


0	Strongly disagree	4
---	-------------------	---

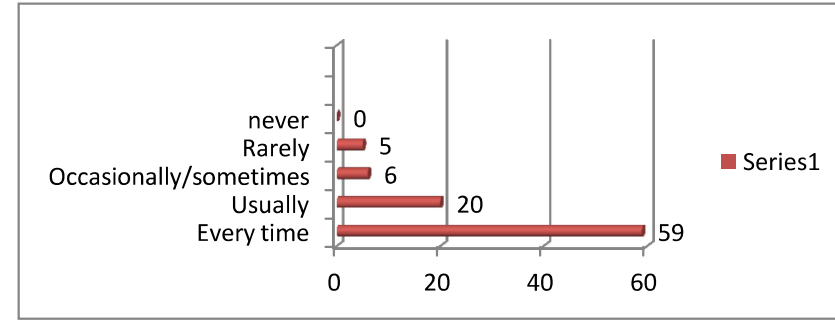
Rank	10. Teachers inform you about your expected competencies ,course outcomes and programme outcomes.	
4	Every time	28
3	Usually	44
2	Occasionally/sometimes	12
1	Rarely	1
0	never	5



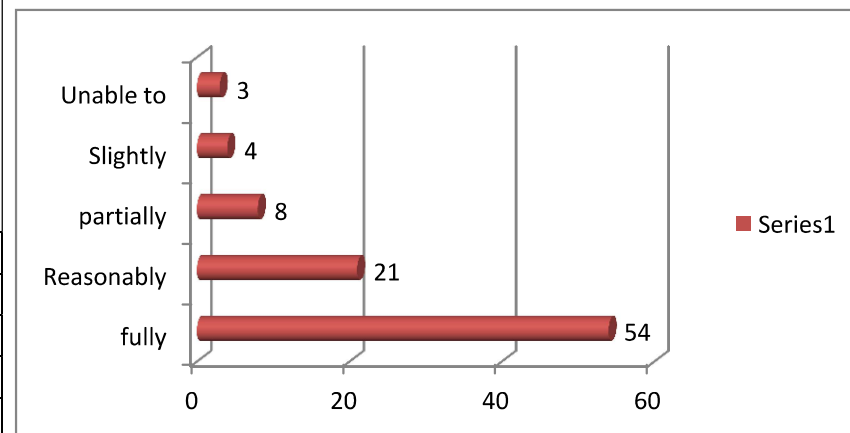
Rank	11. your mentor does a necessary follow-up with an assigned task to you.	
4	Every time	56
3	Usually	18
2	Occasionally/sometimes	9
1	Rarely	3
0	I don't have a mentor	4



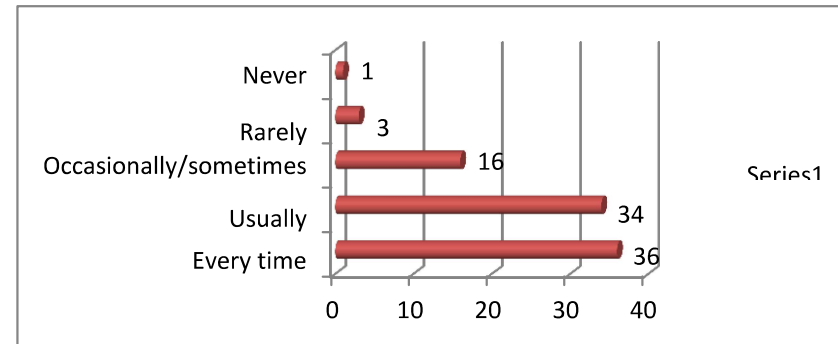
Rank	12. The teachers illustrate the concepts through examples and applications.	
4	Every time	59
3	Usually	20
2	Occasionally/sometimes	6
1	Rarely	5
0	never	0



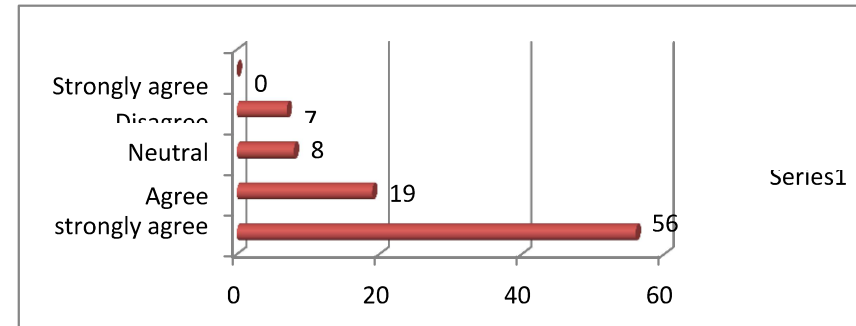
Rank	13. The teachers identify your strengths and encourage you with providing right level of challenges .	
4	fully	54
3	Reasonably	21
2	partially	8
1	Slightly	4
0	Unable to	3



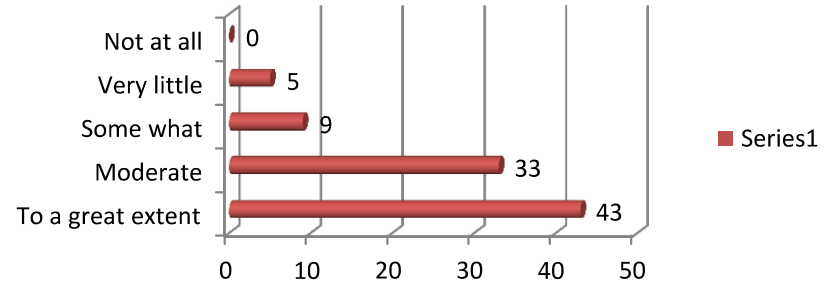
Rank	14. Teachers are able to identify your weaknesses and help you to overcome them.	
4	Every time	36
3	Usually	16
2	Occasionally/sometimes	16
1	Rarely	3
0	Never	1



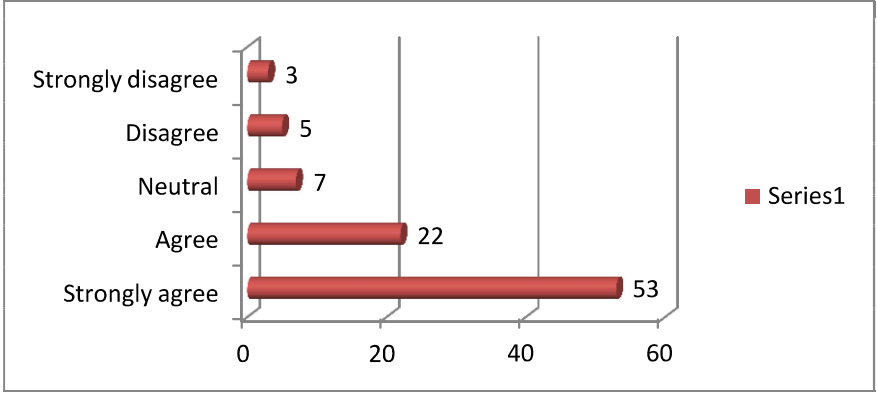
Rank	15. The institution makes effort to engage students in the monitoring , review and continuous quality improvement of thr teaching learning process.	
4	strongly agree	56
3	Agree	19
2	Neutral	8
1	Disagree	7
0	Strongly agree	0



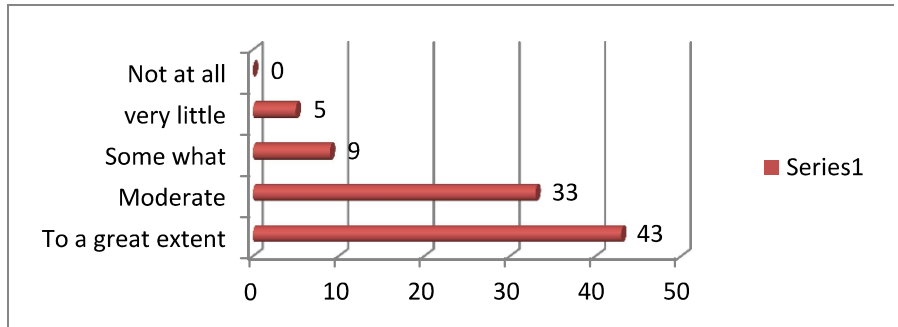
Rank	16. The institute/teachers use student centric methods, such as experiential learning , participative learning and problem solving methodologies for enhancing learning experiences.	
4	To a great extent	43
3	Moderate	33
2	Some what	9
1	Very little	5
0	Not at all	0



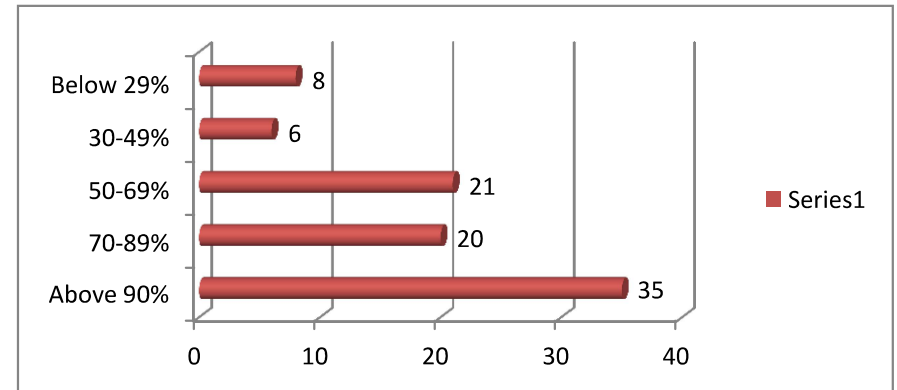
Rank	17. Teachers encourage you to participate in extracurricular activities.	
4	Strongly agree	53
3	Agree	22
2	Neutral	7
1	Disagree	5
0	Strongly disagree	3



Rank	18. Efforts are made by the institute/teacher to inculcate soft skills, life skills and employability skills to make you ready for the world of work.	
4	To a great extent	43
3	Moderate	33
2	Some what	9
1	very little	5
0	Not at all	0



Rank	19. what percentage of teachers use ICT tools such as LCD projector ,multimedia ,ect. while teaching.	
4	Above 90%	35
3	70-89%	20
2	50-69%	21
1	30-49%	6
0	Below 29%	8



Rank	20 . the overall quality of teaching-learning process in your institute is very good.	
4	Strongly agree	35
3	Agree	20
2	Neutral	21
1	Disagree	6
0	Strongly disagree	8

